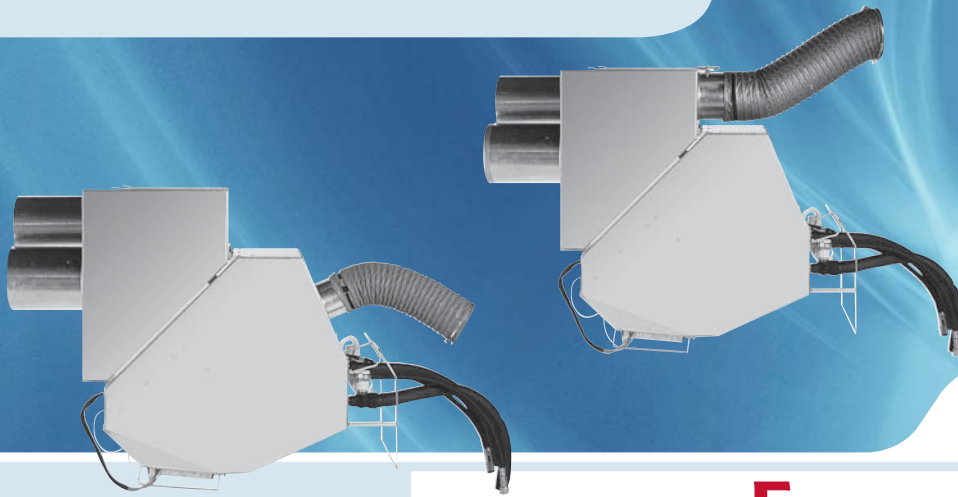


AIR TREATMENT MODULES



Air treatment 42GR



Options/accessories

- Custom-made product on request

Standard controls

NTC communicating controller



- Network communication
- Aquasmart Evolution system compatible
- IAQ and DCV management
- Motorised blinds and lighting control



Aquasmart New System Manager

Features

- Two sizes with two-pipe plus electric heater or four-pipe coils, with an air flow range from 103 to 109 l/s, a cooling capacity of 3.1 kW and a heating capacity range from 2.9 to 3.5 kW.
- Decentralised compact ducted chilled-water fan coil system, designed for installation in plant rooms. This allows centralised service and maintenance.
- Reliable and efficient heating and cooling for office blocks and institutional buildings.
- High efficiency EU6 filter.
- Extremely low sound level.
- The LEC (low energy consumption) fan motor assembly is available as standard. This direct-drive motor is electronically commutated (EC motor), controlled by a 0–10 V signal and allows precise, simple and quiet unit operation in a wide range of rotational speeds in variation from the original speed.
- High-pressure centrifugal fans, compatible with air diffusion systems up to 300 Pa.
- Compatible with the 35BD air diffuser range.
- Safe factory-installed electric heater for single or two-stage hot water heating.
- Available with demand control ventilation (DCV) and CO₂ sensor.
- Can be equipped with a UV-PCO IAQ module.
- Low hydraulic pressure drop with a valve mounted, compatible with all chiller pump kits.
- Quick installation with factory-installed options (controls, valves).



35BD linear diffuser (supply and return air)

Physical data

42GR		Size 1.9	Size 2.9
Fan			
Air flow	l/s (m ³ /h)	109 (394)	103 (371)
Pressure drop	Pa	395	250
Cooling mode			
Total cooling capacity	kW	3.07	3.14
Sensible cooling capacity	kW	2.21	2.20
Water flow rate	l/s (l/h)	0.14 (504)	0.21 (752)
Water pressure drop	kPa	34	52
2-pipe heating mode			
Heating capacity	kW	3.09	3.20
4-pipe heating mode			
Heating capacity	kW	2.92	3.54
Water flow rate	l/s (l/h)	0.07 (251)	0.08 (305)
Water pressure drop	kPa	12	19
Electric heater			
Low-capacity heating	W	450	450
High-capacity heating	W	1700	1800
Sound levels			
Sound power level	dB(A)	74	66
Sound pressure level*	dB(A)	53	45
NR value		48	40
Power supply			
	V-ph-Hz	230-1-50	230-1-50
Power input	W	133	126
Current draw	A	0.64	0.91
Dimensions			
Coil inlet/outlet diameters	in	1/2 gas	1/2 gas
Length	mm	960	960
Height	mm	962	962
Depth	mm	250	420
Weight	kg	35	50

Based on Eurovent rating standards:

Cooling: Entering/leaving air temperature = 27°C db/19°C wb – entering/leaving water temperature = 7°C/12°C.

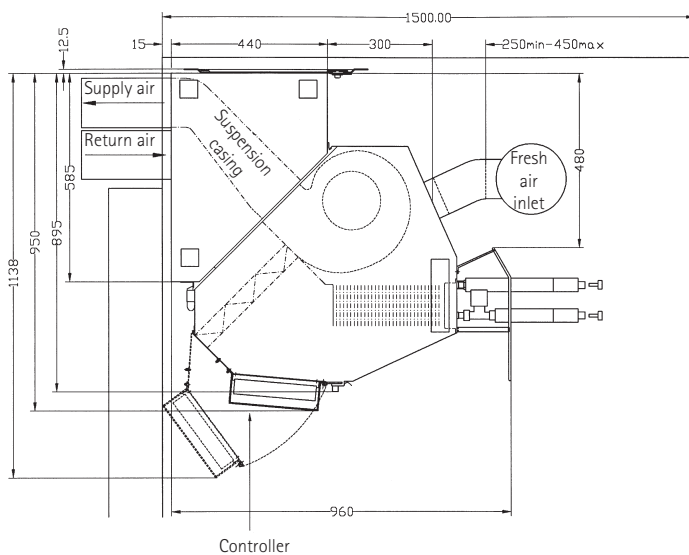
Heating (2 pipes): Entering air temperature = 20°C – entering water temperature = 50°C, same water flow rate as in cooling.

Heating (4 pipes): Entering air temperature = 20°C – entering/leaving water temperature = 70°C/60°C.

* Based on a hypothetical acoustic attenuation for the room and the air distribution system of -21 dB(A).

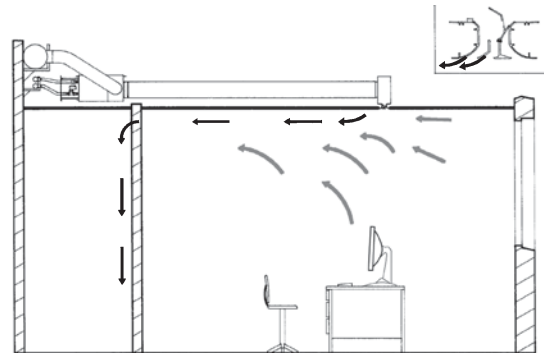
Dimensions, mm

Standard installation



Air distribution with Optimix linear diffusers

Cooling air flow



Heating air flow

